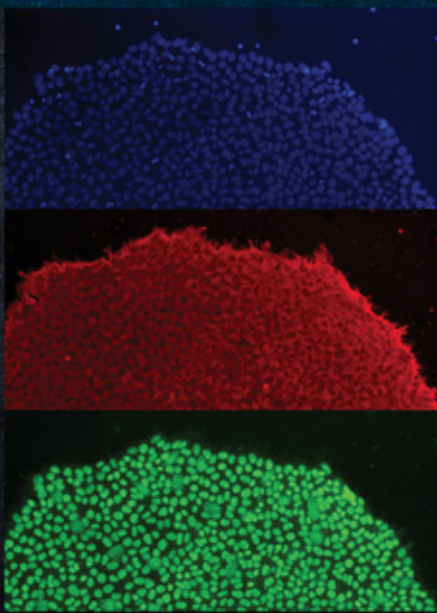


STEM CELLS IN BIRTH DEFECTS RESEARCH AND DEVELOPMENTAL TOXICOLOGY



Edited by
Theodore P. Rasmussen

WILEY

Stem Cells in Birth Defects Research and Developmental Toxicology

Stem Cells in Birth Defects Research and Developmental Toxicology

Edited by Theodore P. Rasmussen
University of Connecticut
Storrs, Connecticut, USA

WILEY

This edition first published 2018
© 2018 John Wiley & Sons, Inc.

All rights reserved. No part of this publication may be reproduced, stored in a retrieval system, or transmitted, in any form or by any means, electronic, mechanical, photocopying, recording or otherwise, except as permitted by law. Advice on how to obtain permission to reuse material from this title is available at <http://www.wiley.com/go/permissions>.

The right of Theodore P. Rasmussen to be identified as the editor of this work has been asserted in accordance with law.

Registered Office

John Wiley & Sons, Inc., 111 River Street, Hoboken, NJ 07030, USA

Editorial Office

111 River Street, Hoboken, NJ 07030, USA

For details of our global editorial offices, customer services, and more information about Wiley products visit us at www.wiley.com.

Wiley also publishes its books in a variety of electronic formats and by print-on-demand. Some content that appears in standard print versions of this book may not be available in other formats.

Limit of Liability/Disclaimer of Warranty

In view of ongoing research, equipment modifications, changes in governmental regulations, and the constant flow of information relating to the use of experimental reagents, equipment, and devices, the reader is urged to review and evaluate the information provided in the package insert or instructions for each chemical, piece of equipment, reagent, or device for, among other things, any changes in the instructions or indication of usage and for added warnings and precautions. While the publisher and authors have used their best efforts in preparing this work, they make no representations or warranties with respect to the accuracy or completeness of the contents of this work and specifically disclaim all warranties, including without limitation any implied warranties of merchantability or fitness for a particular purpose. No warranty may be created or extended by sales representatives, written sales materials or promotional statements for this work. The fact that an organization, website, or product is referred to in this work as a citation and/or potential source of further information does not mean that the publisher and authors endorse the information or services the organization, website, or product may provide or recommendations it may make. This work is sold with the understanding that the publisher is not engaged in rendering professional services. The advice and strategies contained herein may not be suitable for your situation. You should consult with a specialist where appropriate. Further, readers should be aware that websites listed in this work may have changed or disappeared between when this work was written and when it is read. Neither the publisher nor authors shall be liable for any loss of profit or any other commercial damages, including but not limited to special, incidental, consequential, or other damages.

Library of Congress Cataloging-in-Publication Data:

Names: Rasmussen, Theodore P., 1962- editor.

Title: Stem cells in birth defects research and developmental toxicology / [edited by] Theodore P. Rasmussen.

Description: First edition. | Hoboken, NJ : Wiley, 2018. | Includes bibliographical references and index. |

Identifiers: LCCN 2017056789 (print) | LCCN 2017059841 (ebook) | ISBN 9781119283225 (pdf) | ISBN 9781119283232 (epub) | ISBN 9781119283218 (hardback)

Subjects: | MESH: Stem Cell Research | Pluripotent Stem Cells—drug effects | Fetal Research | Teratogens—analysis | Neurodevelopmental Disorders | Toxicity Tests

Classification: LCC QH588.S83 (ebook) | LCC QH588.S83 (print) | NLM QU 325 | DDC 616.02/774—dc23

LC record available at <https://lccn.loc.gov/2017056789>

Cover design by: Wiley

Cover images: **Immunofluorescent staining of a human iPS cell colony during early stages of iPS stem cell line derivation.** Green staining identifies the expression of the pluripotency-associated transcription factor SOX2, red staining identifies LIN28, and blue staining (DAPI) allows visualization of cell nuclei. Image courtesy of A. Flamier. (Background image) © Pinghung Chen/EyeEm/Gettyimages

Set in 10/12pt WarnockPro by SPi Global, Chennai, India

Printed in the United States of America

Contents

List of Contributors *xiii*

Preface *xix*

Part I Introduction and Overview 1

- 1 The Basics of Stem Cells and Their Utility as Platforms to Model Teratogen Action and Human Developmental and Degenerative Disorders** 3
Bindu Prabhakar, Soowan Lee, and Theodore P. Rasmussen
- 1.1 Stem Cell Types and Basic Function 3
- 1.2 Pluripotency 6
- 1.2.1 Poised Chromatin of the Pluripotent Epigenome 6
- 1.2.2 Undirected Differentiation of Pluripotent Cells to Embryoid Bodies 7
- 1.2.3 Directed Differentiation of Pluripotent Cells 8
- 1.3 *In vitro* Uses of Pluripotent Cells 9
- 1.3.1 Pluripotent Cells for Toxicology 9
- 1.3.2 Pluripotent Cells for Teratology 11
- 1.3.3 Limitations of Pluripotent Stem Cells 12
- 1.4 Adult Stem Cells *In vivo* 13
- 1.5 Emerging Trends in Stem Cell Culture 14
- 1.5.1 Use of Coculture 15
- 1.5.2 Organoids 16
- 1.5.3 Microfluidics 17
- 1.5.4 Other Cell Types with Stem-Cell-Like Properties 18
- 1.6 Future Directions 18
- 1.6.1 iPSCs, Pharmacogenomics, and Predictive Teratology 18
- 1.6.2 Stem Cell Systems for Environmental Toxicology 19
- References 20

Part II Using Pluripotent Cells for the Detection and Analysis of Teratogens 25

2 Stem Cells and Tissue Engineering Technologies for Advancing Human Teratogen Screening 27

Jiangwa Xing, Geetika Sahni, and Yi-Chin Toh

Abbreviations 27

- 2.1 Introduction 28
- 2.2 Current DART Regulatory Guidelines and Methods 29
 - 2.2.1 Governing Bodies 29
 - 2.2.2 Terminologies and Definitions 29
 - 2.2.3 Testing Methodologies 30
 - 2.2.4 Limitations of Animal-Based DART Testing 32
- 2.3 *In vitro* Animal-Based Models for Developmental Toxicity Testing 33
 - 2.3.1 Current *In vitro* Animal-Based Models for Developmental Toxicity Testing 33
 - 2.3.2 The MM Assay 35
 - 2.3.3 The WEC Assay 35
 - 2.3.4 The ZEDT Assay 36
 - 2.3.5 New Engineering and Microfabrication Technologies for Model Improvement 38
- 2.4 *In vitro* Stem-Cell-Based Developmental Toxicity Models 42
 - 2.4.1 Embryonic Stem Cell Test (EST) 42
 - 2.4.2 ReproGlo Reporter Assay 45
 - 2.4.3 Metabolite Biomarker Assay Using hESCs 46
 - 2.4.4 Mesoendoderm Biomarker-Based Human Pluripotent Stem Cell Test (hPST) 47
 - 2.4.5 The Micropatterned Human Pluripotent Stem Cell Test (μ P-hPST) 48
- 2.5 Conclusion and Future Directions 50
- References 51

3 Use of Embryoid Bodies for the Detection of Teratogens and Analysis of Teratogenic Mechanisms 59

Anthony Flamier

- 3.1 Embryoid Body Assays: Background 59
 - 3.1.1 Teratogens and Teratogenesis 59
 - 3.1.2 Classic Protocols for Teratogen Assays 60
 - 3.1.3 Pluripotent Stem Cell Technology and its Applications for Teratogen Detection 62
- 3.2 Detection of Teratogens Using EBs 63

3.2.1	Formation of Embryoid Bodies for Teratogen Assays	63
3.2.2	Cytotoxicity versus Teratogenicity	65
3.2.3	EB Treatments	65
3.3	Teratogenic Mechanisms	65
3.3.1	EB Growth and Morphogenesis	65
3.3.2	Molecular Analysis	66
3.3.3	Alternative Analyses	67
	Acknowledgments	67
	References	67
4	Stem-Cell-Based <i>In vitro</i> Morphogenesis Models to Investigate Developmental Toxicity of Chemical Exposures	71
	<i>Yusuke Marikawa</i>	
4.1	Introduction	71
4.2	Stem-Cell-Based <i>In vitro</i> Morphogenesis Model	73
4.2.1	Mouse P19C5 EB as an <i>In vitro</i> Gastrulation Model	73
4.2.2	Quantitative Evaluation of Morphogenetic Impact	77
4.2.3	Detection of Developmentally Toxic Exposures Using Morphometric Analyses	78
4.2.4	Investigations into the Molecular Mechanisms of Teratogen Actions Using P19C5 EBs	81
4.3	Future Directions: Enhancing Morphogenesis-Based Assays	83
4.3.1	Analyses of Changes in Gene Expression Relevant for Teratogenesis	83
4.3.2	Detection of Proteratogens Using Metabolic Systems	84
4.3.3	Representation of Additional Developmental Regulator Signals	84
4.3.4	Recapitulation of Human Embryogenesis Using Human Embryonic Stem Cells	85
4.4	Concluding Remarks	85
	Acknowledgment	86
	References	86
5	Risk Assessment Using Human Pluripotent Stem Cells: Recent Advances in Developmental Toxicity Screens	91
	<i>Kristen Buck and Nicole I. zur Nieden</i>	
5.1	Introduction	91
5.2	Animal Embryo Studies to Evaluate Developmental Toxicity	91
5.3	Usage of Mouse Embryonic Stem Cells in Developmental Toxicity	94
5.4	Alternative Endpoint Read-Out Approaches in the EST	96
5.4.1	Simple and Complex Methods – Trends Are Ever Changing	96

5.4.2	Genomics, Transcriptomics, Proteomics, and Metabolomics	98
5.5	Novel Methods and Protocols to Replicate Human Development	99
5.5.1	Human Embryonic Stem Cells	100
5.5.2	Multipotent Stem Cells and Beyond	103
5.6	Future Applications	105
	Acknowledgments	105
	References	106

Part III Human Developmental Pathologies Mediated by Adult Stem Cells 119

6	Modeling the Brain in the Culture Dish: Advancements and Applications of Induced Pluripotent Stem-Cell-Derived Neurons	121
	<i>Sandhya Chandrasekaran, Prashanth Rajarajan, Schahram Akbarian, and Kristen Brennand</i>	
6.1	Introduction	121
6.2	Methods to Generate Patient-Derived Neurons	122
6.2.1	Directed Differentiation of Neurons from Pluripotent Stem Cells	122
6.2.2	Dopaminergic Neurons	123
6.2.3	Glutamatergic Neurons	123
6.2.4	GABAergic Interneurons	124
6.2.5	Striatal Neurons	125
6.2.6	Other Neurons (Serotonergic and Motor)	126
6.2.7	Limitations of Directed Differentiation	127
6.3	Neuronal Induction from Fibroblasts and hiPSCs	127
6.3.1	Induced Neurons (iNeurons)	128
6.3.2	Dopaminergic iNeurons	129
6.3.3	Glutamatergic iNeurons	130
6.3.4	Induced GABAergic Interneurons	130
6.3.5	Induced Medium Spiny Neurons	131
6.3.6	Serotonergic iNeurons	131
6.3.7	Induced Motor Neurons	131
6.3.8	Limitations of Neuronal Induction	132
6.4	Cerebral Organoids: Neural Modeling in Three Dimensions	132
6.4.1	Current Methods for Deriving Cerebral Organoids	132
6.4.2	Applications of Cerebral Organoids: Disease Modeling	134
6.4.3	Limitations in the Use of Cerebral Organoids	135
6.5	Epigenetic Considerations in hiPSC Donor Cell Choice	136

6.6	Aging Neurons	137
6.6.1	Techniques to Age hiPSCs	137
6.6.2	Aging and Dedifferentiation	138
6.6.3	Future Directions	139
6.7	Drug Testing Using hiPSCs	140
6.7.1	Facilitating Clinical Trials	140
6.7.2	Titrating Drug Dosage	140
6.7.3	Evaluating Chemotherapies	141
6.7.4	Steering Personalized Medicine	141
6.7.5	Forging Neural Networks	142
6.8	Promises in the Field	142
6.8.1	High-Throughput Automation	142
6.8.2	Neural Tissue Engineering Using hiPSCs	142
6.8.3	hiPSC-Based Transplantation Therapies	143
6.8.4	Advances Using Gene-Editing Technologies	144
6.9	Concluding Remarks	145
	References	146
7	Modeling Genetic and Environment Interactions Relevant to Huntington's and Parkinson's Disease in Human Induced Pluripotent Stem Cells (hiPSCs)-Derived Neurons	159
	<i>Piyush Joshi, M. Diana Neely, and Aaron B. Bowman</i>	
7.1	Gene–Environment Interactions Assessed in hiPSC-Derived Neurons	159
7.2	Modeling of Neurological Diseases with hiPSCs	160
7.3	Cell Viability Assays	162
7.4	Mitochondria	163
7.5	Oxidative Stress	164
7.6	Neurite Length by Immunocytochemistry (ICC)	164
7.7	Conclusions	166
	References	167
8	Alcohol Effects on Adult Neural Stem Cells – A Novel Mechanism of Neurotoxicity and Recovery in Alcohol Use Disorders	173
	<i>Rachael A. Olsufka, Hui Peng, Jessica S. Newton, and Kimberly Nixon</i>	
8.1	Introduction	173
8.2	The “Birth” of the Study of “Neuronal Cell Birth”	175
8.3	Components of Adult Stem-Cell-Driven Neurogenesis	180
8.3.1	Permissive Sites of Adult Neurogenesis in Brain	180
8.3.2	Stem Cells Versus Progenitors	182
8.3.3	Proliferation	184
8.3.4	Differentiation and Migration	187

8.3.5	Cell Survival and Integration	188
8.4	Alcohol Effects on Adult Neural Stem Cells and Neurogenesis	189
8.4.1	Proliferation	189
8.4.2	Differentiation and Migration	193
8.4.3	Survival and Integration	194
8.5	Extrinsic Factors Influence the Neurogenic Niche	196
8.6	Alcohol and the Niche	198
8.7	Conclusions	200
	References	201
9	Fetal Alcohol Spectrum Disorders: A Stem-Cellopathy?	223
	<i>Amanda H. Mahnke, Nihal A. Salem, Alexander M. Tseng, Annette S. Fincher, Andrew Klopfer, and Rajesh C. Miranda</i>	
9.1	Fetal Alcohol Spectrum Disorders	223
9.2	Stem Cells	225
9.2.1	Totipotent Stem Cells	227
9.2.2	Placental Stem Cells – Trophoblast	230
9.2.3	Embryonic Stem Cells and Induced Pluripotent Stem Cells	231
9.3	Endoderm	234
9.3.1	Liver	234
9.4	Mesoderm	235
9.4.1	Cardiac Development	235
9.4.2	Kidney	237
9.5	Ectoderm	238
9.5.1	Neuroectoderm Development	238
9.5.2	Neural Crest	239
9.5.3	Neural Tube Development	240
9.6	Future Directions	243
9.6.1	Fetal Origin of Adult Stem Cells	243
9.6.2	Sex Differences	244
9.6.3	Stem Cell Therapy	245
9.7	Conclusion	245
	References	246
10	Toxicological Responses in Keratinocyte Interfollicular Stem Cells	261
	<i>Rambon Shamilov and Brian J. Aneskievich</i>	
10.1	Epidermal Keratinocyte Stem Cells	261
10.2	Arsenic	267
10.3	Dioxin	269
10.4	Bacterial Toxins	273

10.5	Conclusions and Prospective Considerations	274
	References	275

Part IV Recent Innovations in Stem Cell Bioassay and Platform Development 285

11	Stem-Cell Microscale Platforms for Toxicology Screening	287
	<i>Tiago G. Fernandes and Joaquim M. S. Cabral</i>	
11.1	Introduction	287
11.2	Stem Cell Models for Toxicology Assessment	288
11.3	Biomimetic Microscale Systems for Drug Screening	290
11.3.1	Design and Microfabrication: Soft Lithography and Replica Molding	290
11.3.2	Microcontact Printing and Surface Patterning	292
11.3.3	Robotic Spotting and Printing	292
11.4	Microtechnologies for Drug Discovery	293
11.5	Devices for High-Throughput Toxicology Studies	294
11.6	Cellular Microarray Platforms	295
11.7	Microfluidic Platforms	298
11.8	Conclusions and Future Perspectives	301
	Acknowledgments	301
	References	302
12	HepaRG Cells as a Model for Hepatotoxicity Studies	309
	<i>André Guillouzo and Christiane Guguen-Guillouzo</i>	
12.1	Introduction	309
12.2	Characteristics of HepaRG Cells	310
12.2.1	A Bipotent Human Liver Cell Line	310
12.2.2	HepaRG Hepatocytes Express Liver-Specific Functions	314
12.2.3	Long-Term Functional Stability of HepaRG Hepatocytes	315
12.3	Biotransformation and Detoxification Activities	316
12.3.1	Drug Metabolism Capacity	316
12.3.2	Biokinetics and Intrinsic Clearances	318
12.3.3	Applications	319
12.4	Toxicity Studies	320
12.4.1	Hepatotoxicity Screening	320
12.4.2	Cellular Cytotoxicity	322
12.4.3	Genotoxicity and Carcinogenicity Screening	324
12.4.4	Identification of Target Genes	325
12.4.5	Cholestasis	326
12.4.6	Steatosis	327

12.4.7	Phospholipidosis	328
12.5	Conclusions and Perspectives	328
	Acknowledgments	329
	References	330

Index	<i>341</i>
--------------	------------

List of Contributors

Schahram Akbarian

Icahn School of Medicine at
Mount Sinai
Department of Neuroscience
New York, NY 10029
USA

Icahn School of Medicine at Mount
Sinai
Friedman Brain Institute
New York, NY 10029
USA

Icahn School of Medicine at Mount
Sinai
Department of Psychiatry
New York, NY 10029
USA

Brian J. Aneskievich

University of Connecticut
Department of Pharmaceutical
Sciences
69 North Eagleville Road, U-3092
Storrs, CT 06269
USA

Aaron B. Bowman

Vanderbilt University (VU)
Department of Pediatrics and
Neurology, Vanderbilt University
Medical Center (VUMC)
1161 21st Avenue South, D-4105
MCN, Nashville, TN 37232
USA

Vanderbilt University (VU)
Department of Biochemistry and
Vanderbilt Brain Institute
465 21st Avenue South, 6140 MRB3
Nashville, TN 37232
USA

Kristen Brennand

Icahn School of Medicine at Mount
Sinai
Department of Neuroscience
New York, NY 10029
USA

Icahn School of Medicine at Mount
Sinai
Friedman Brain Institute
New York, NY 10029
USA